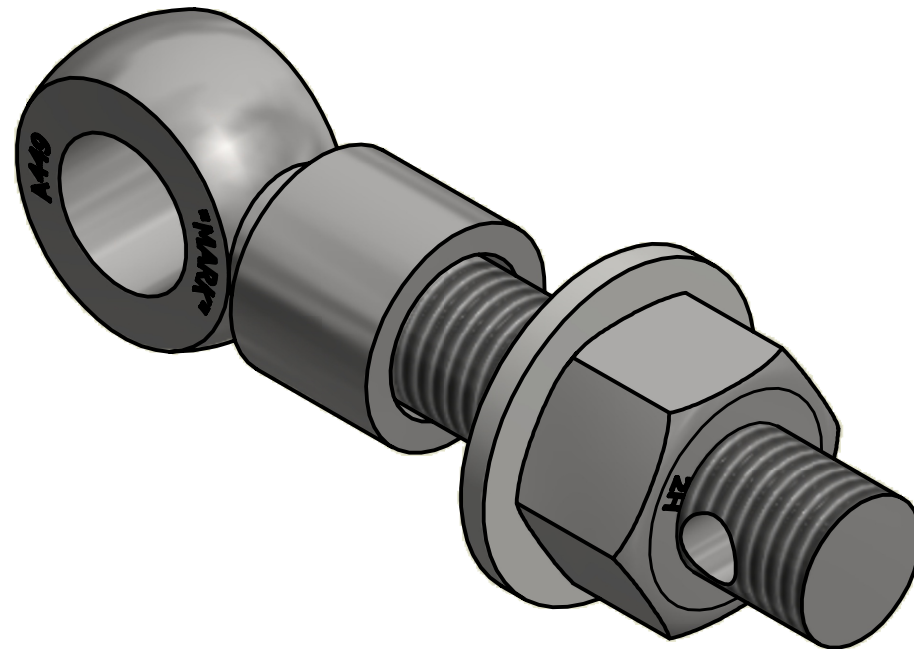
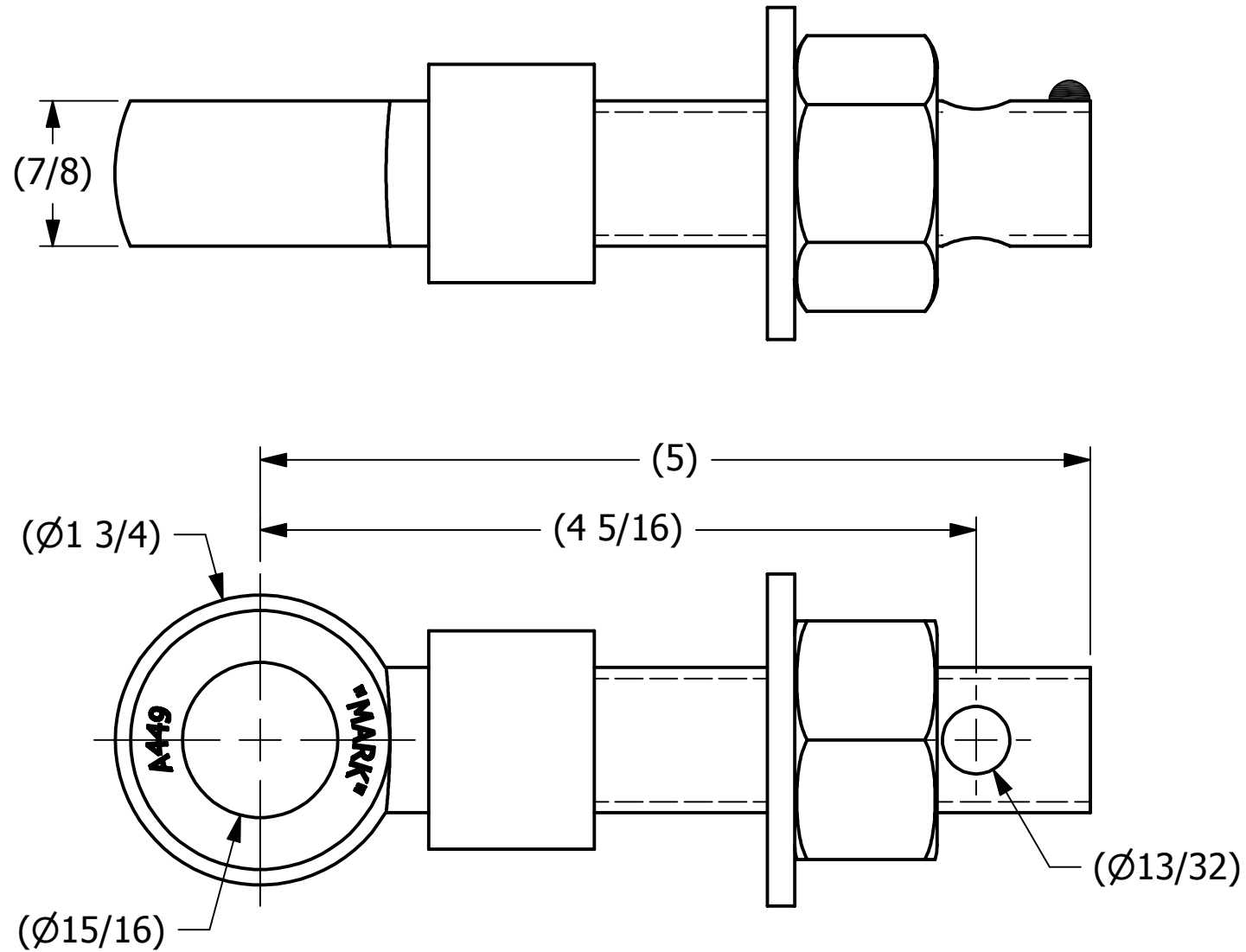


SALES DRAWING



ISOMETRIC VIEW

NOTES:

1. JET LUBE(PFPE GREASE) APPLIED TO WORKING THREAD AREA, THE BOTTOM FACE OF THE NUT, AND THE TOP FACE OF THE WASHER.
2. BOLT STRENGTH EQUIVALENT TO SAE J429 GRADE 5.
3. WASHER IS ASTM F436 HARDENED.

THIS PRINT, PROPERTY OF SALCO PRODUCTS INC., CONTAINS PROPRIETARY INFORMATION AND MUST NOT BE COPIED, REPRODUCED, OR USED DETRIMENTALLY TO OUR INTEREST.

UNLESS OTHERWISE SPECIFIED DIMENSIONAL TOLERANCES	
FRACTIONAL:	±1/16
X.XX:	±.03
X.XXX:	±.015
ANGULAR:	±1°
DEBURR ALL SHARP EDGES. ALL MACHINED SURFACES TO HAVE A 125 RMS FINISH UNLESS NOTED OTHERWISE.	
THIRD ANGLE PROJECTION	

DRAWN BY:	CHL
CHECKED BY:	ACC
PROTOTYPE BY:	CHL
PROTOTYPE DATE:	10/16/2006
APPROVED FOR PRODUCTION BY:	ACC
PRODUCTION DATE:	4/11/2007

B	RJP	11-16-15	UPDATED MARKING & TITLE BLOCK	
A	CHL	4-11-07	NEW PART ADDED TO SYSTEM	
REV	BY	DATE	DESCRIPTION	
<div> <u>SALCO PRODUCTS, INC.</u></div>				
PART NAME: EYEBOLT ASSEMBLY 7/8"X5"				
MATERIAL: CARBON STEEL, ASTM A449 TYPE 1				
PROJECT #:		WAG0365	SHEET #:	1 OF 1
			SCALE:	1:1
DRAWING #:		B22652	PART #:	
			EB785XHAG5CL	